

JID New Submission Checklist

To facilitate the review of your submission, ensure it includes the following items. Detail on all items below as well as JID's editorial policies can be found in our [Information for Authors](#).



Author Information Required

- Each author's name, email address, and institution
- Corresponding author -- Only one permitted
- ORCiDs for first and corresponding authors
- CRediT Contribution Statement in the following format:
Conceptualization: AB, BC; Formal Analysis: BC, CD; Writing – original draft: AB, BC, CD.
- Conflict of Interest Statement



Study Information Required

- Data Availability Statement.
- Human subjects studies should have “written, informed consent” from each participant; if not, explain why in the text. If reporting on children, the parent or guardian should have provided the consent; be sure this is stated clearly.
- Approving institution's name for all human and animal studies; if approvals were not required, explain why in the text.
- CONSORT compliance for reports of Randomized Controlled Trials.
- Acknowledgements should include information about the funding of the research and the involvement of the funder in the study.



Forms Required

- Author forms are required for publication; each author must complete the online author form at the link emailed to them on submission.
- License to Publish form is required from the corresponding author only; a link to this form is emailed on submission.



Style & Files Guidance

- **General Guidance for all Submissions**
 - Manuscript text should be a .doc/.docx file.
 - Word Counts exclude abstract, references, figure legends, tables, and supplemental data.
 - Figures and Tables should be cited in order in the text.
 - References should be in JID style (Author, year); see [details](#).
 - Figure permissions – If reprinting figures from another publication, upload the permissions to do so as a “supporting document”. Include a permissions statement with a reference to the reprinted material in the figure legend (e.g., “Reprinted from Smith et al, 2002 with permission from Elsevier”).



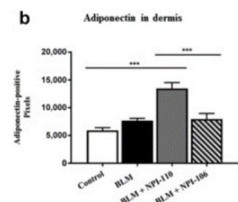
Style & Files (Continued)

- **Original Articles** follow this format:
Title Page, Abstract (200 words max), Introduction, Results, Discussion, Materials and Methods, Data Availability Statement, Conflict of Interest Statement, Acknowledgments, CrediT Statement (author contributions), References, Tables, Figure Legends.
Max 3500 words / 6 display items
- **Brief Reports** follow this format:
Title Page, Abstract (200 words max), Introduction, Results, Discussion, Materials and Methods, Data Availability Statement, Conflict of Interest Statement, Acknowledgments, CrediT Statement (author contributions), References, Tables, Figure Legends.
Max 1700 words / 2 display items
- **Letters to the Editor** follow this format:
Title Page, Letter Text, Data Availability Statement (if applicable), Conflict of Interest Statement, Acknowledgments, CrediT Statement (author contributions), References (maximum of 15), Tables, Figure Legends.
Max 1000 words / 2 display items
- **For Other Article Types**
Refer to the [Information for Authors](#).



Figure Guidance

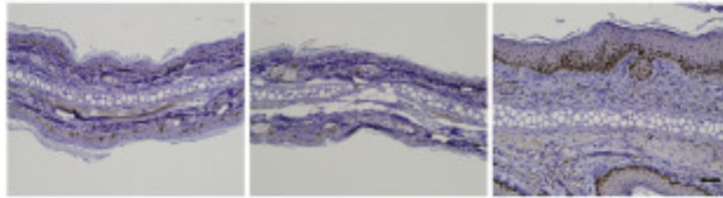
- **Overall title** – A brief overall title that does not refer to individual panels (see bold red text below) should be followed by a detailed legend.
Figure 2. Amplification of autoreactive T cells in KA/KA skins. (a) Flow cytometric analysis of T cells with TCR V β 5.1+ antibody, gated at CD4, in the skin of WT and kinase-dead Ik κ knockin (KA/KA) mice at 4 months of age (n = 3/group). (b) Data from (a), represented by mean \pm SEM (three repeats)...
- **300 dpi image files** are required if the manuscript is accepted for publication. Acceptable file formats include .eps, .tif, .jpg, .pdf, .pptx; be prepared to supply these.
- **Label panels in lower case** and present them in the white space above and to the left of each image (see examples below).
- **Bar graphs** should use three solid colors - white, gray, and black; on any additional bars a pattern (dots, checks, etc.) or color should be used (not shades of gray).
- **Rosner & Yamada** provide general guidance on properly presenting data in figures. Figures will undergo the checks outlined in this article.
- **Brightness and contrast adjustments** to images should be made sparingly and must be noted in the figure legend. No adjustments may be made to obscure or eliminate information present in the original.



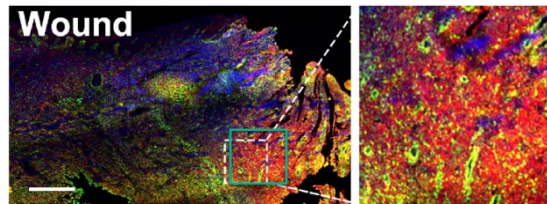


Figures (continued)

- Photomicrograph panels should be separated by white space or a solid black line; use a bar to indicate magnification.

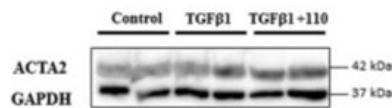


- Inset image boxes should be placed to match the magnified image. The below example is incorrect, **the green box shows the correct placement.**

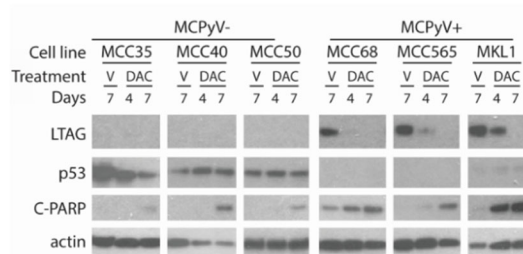


- Data from multiple gels may not be combined. Removing a complete lane from a gel and splicing the remaining lanes is allowable, but this should be clearly noted by the appearance of white space or a separating line. If you are presenting non-contiguous blots, white space or a solid black line should be used to indicate they are separate images. For detail see [Rossner and Yamada](#) (see especially the section “Splicing lanes together”).

Example: single gel, no splicing



Example: single gel, proper presentation of non-contiguous rows and lanes



Submit Your Manuscript

- SUBMIT your manuscript at JID’s submission site: <http://mc.manuscriptcentral.com/jid>.
- CHECK that the .pdf displays your submitted files as expected. This is what most reviewers and editors will view.
- \$50 SUBMISSION FEE is charged for all unsolicited submissions; payments are made via PayPal.